

# Airport Development Program

Hydrant Fueling Infrastructure  
(Future)

Hydrant Fueling Infrastructure  
Gates 46-51(In Design)

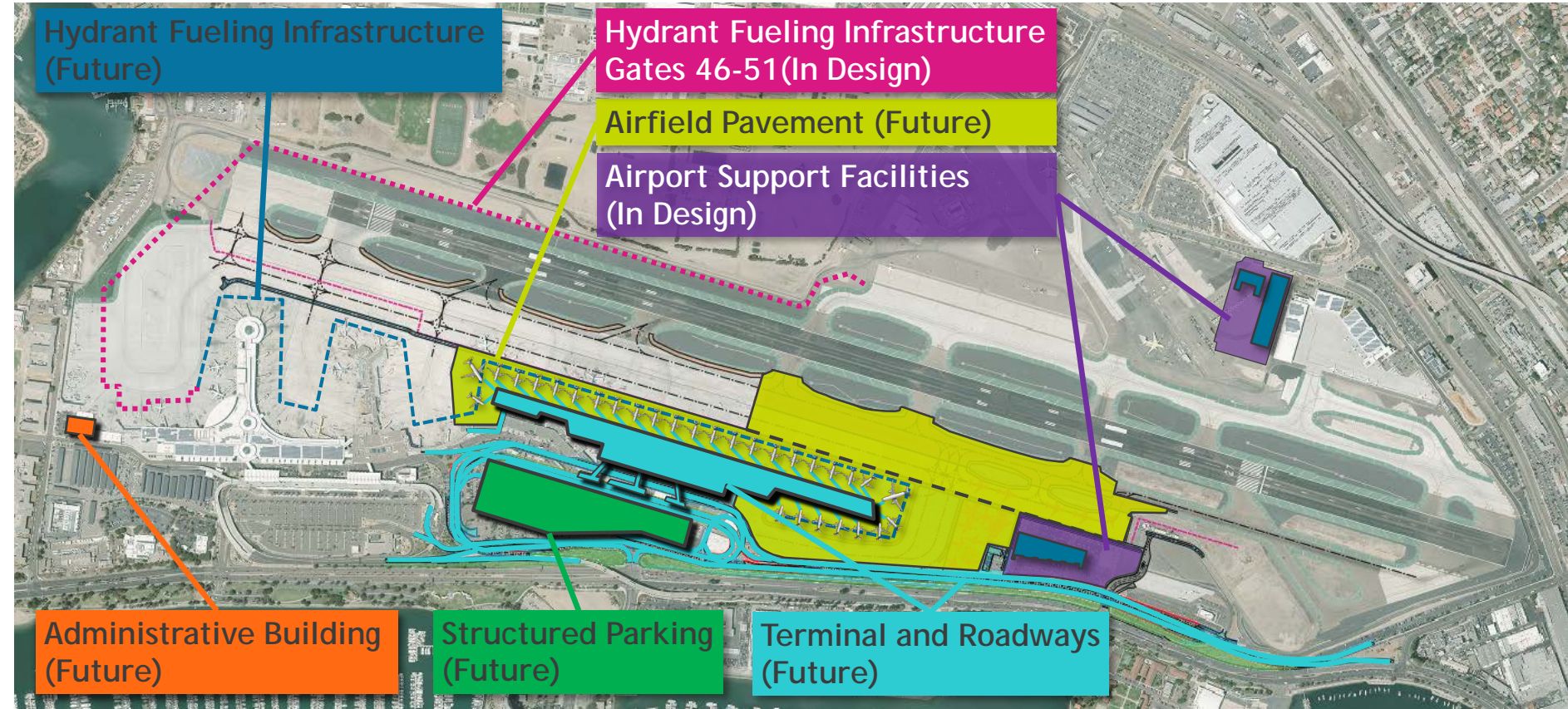
Airfield Pavement (Future)

Airport Support Facilities  
(In Design)

Administrative Building  
(Future)

Structured Parking  
(Future)

Terminal and Roadways  
(Future)





## **DBIA – WESTERN PACIFIC REGION**

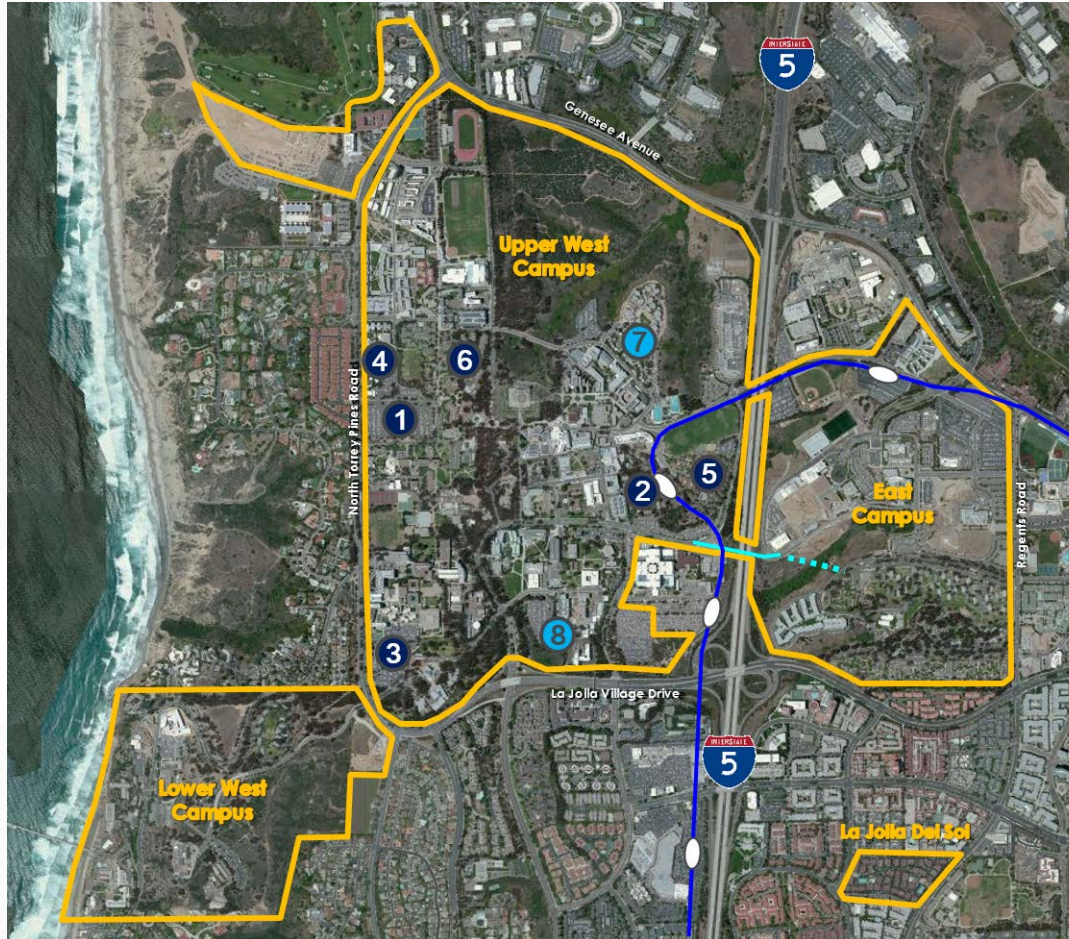
### **WHY DIVERSE TEAMS HELP TO BUILD SUCCESSFUL PROJECTS**

Robin Tsuchida  
Senior Director, Project Management  
Capital Program Management

September 20, 2018



# FUTURE UNDERGRADUATE HOUSING



- 1) North Torrey Pines Living and Learning (2,000 Beds; 2020)
- 2) Pepper Canyon West (1,000 Beds; 2022)
- 3) 7<sup>th</sup> College Living and Learning (1,800 Beds; 2023)
- 4) Extension Site (1,200 Beds; 2024)
- 5) Pepper Canyon East (800 Beds; 2025)
- 6) Marshall Lowers (1,600 Beds; 2026)

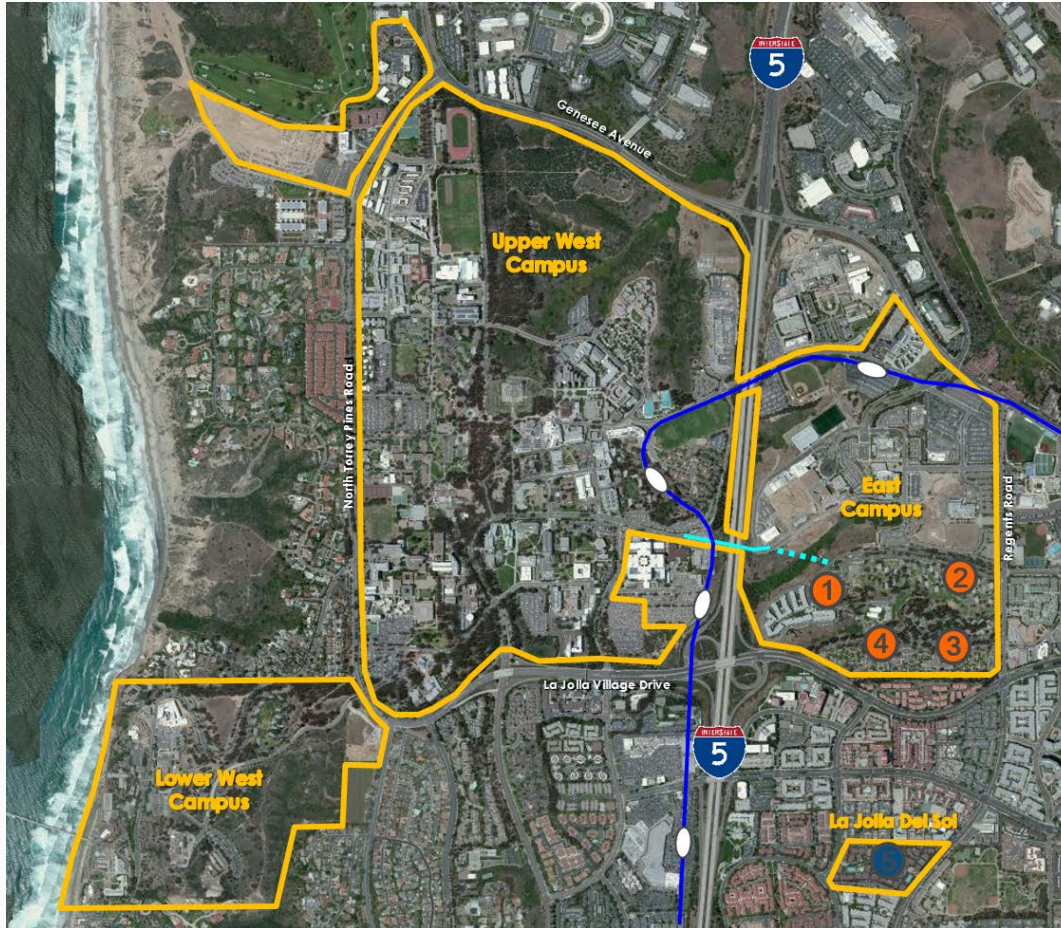
*7 & 8 - potential to convert grad beds to undergrad beds; timing TBD (would add approx. 1,080 beds)*

Total Estimated Net New Undergraduate Beds:  
**8,400**

Total Undergraduate Beds: **19,410**



# FUTURE GRADUATE HOUSING



- 1) Nuevo West  
(800 Beds; 2020)
- 2) Nuevo East  
(1,414 Beds; 2020)
- 3) South Mesa Ph1  
(500 Beds; 2023)
- 4) South Mesa Ph2  
(1,000 Beds; 2024)

*5 - potential to convert  
to graduate student and  
students with families  
(450 Beds) - timing TBD*

Total Net New Graduate  
Beds: 3,300

Total Graduate Beds:  
7,464

This aerial map of San Diego illustrates the four UCSD campuses: Upper West, Lower West, East, and La Jolla Del Sol. Major roads shown include Interstate 5, North Torrey Pines Road, and La Jolla Village Drive. A blue line with white ovals represents a proposed transit route. A red box labeled '1' is located in the East Campus area, and a red box labeled '2' is located in the Lower West Campus area.

- Total Units: 1,900



# EAST CAMPUS BUILDOUT CONCEPT



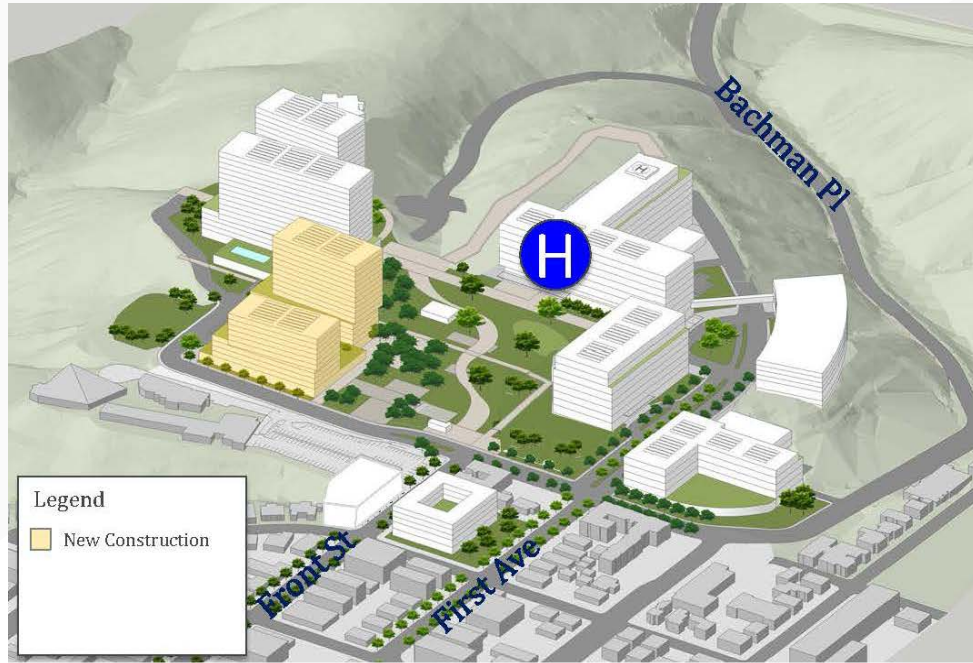
# SIO NEIGHBORHOOD PLAN



- 1 Marine Conservation Facility
- 2 Center for Coastal Studies
- 3 Oceans & Human Health
- 4 Outreach Center & Offices
- 5 Underground Parking Structure



# PHASE 6



**Estimated Completion Date: 2032**

- Housing Phase B
- Central Plaza/Open Space





Zero Net Energy  
Imperial Beach Library  
TBL, Penick, Jeff Katz Architect



## Capital Improvement Projects 2018/19 - 2022/23

### Southeastern Live Well Center



**Scope:** Site acquisition and construction of approximately 80,000 sq ft office building to consolidate community Health and Probation services, vacating aged facilities.

**Schedule:** Entitlement, programming 2017/18, Design Build advertisement fall/winter 2018/19

**Est. Cost:** \$74 million project cost

**Delivery:** Design Build

### County Administration Center Renovation



**Scope:** Phased replacement of Life Safety, Mechanical, Electrical, Plumbing, and Architectural systems past their useful life and to meet current code.

**Schedule:** Procure Architect and CMAR spring 2018

**Est. Cost:** \$108 million project cost

**Delivery:** CM at Risk

### San Diego Juvenile Justice Campus



**Scope:** Phased renovation and redevelopment of existing site and facility to include new community supervision services, urban camp setting, housing and support facilities.

**Schedule:** Masterplan, programming 2017/18 for Design Build advertisement fall 2018/19

**Est. Cost:** \$104 million Phase I

**Delivery:** Design Build

### County Live Well Campus



**Scope:** Redevelop the Health Services Complex, consolidating services including Live Well Center, parking structure and Contracted Assessment Center.

**Schedule:** Programming and entitlement 2018 for Design Build procurement summer 2019

**Est. Cost:** \$177 million project cost

**Delivery:** Design Build



**County of San Diego**  
**Department of General Services**  
5560 Overland Avenue, Suite 410  
San Diego, CA 92123  
858.694.3610

[http://www.sandiegocounty.gov/content/sdc/general\\_services.html](http://www.sandiegocounty.gov/content/sdc/general_services.html)

Register for notification of solicitations at <http://buynei.sdccounty.ca.gov>

### Lakeside Branch Library



**Scope:** Construct new 17,000 sq ft Zero Net Energy Library with teen and children's spaces, and community room.

**Schedule:** Site acquisition Oct. 2017; procurement summer 2018

**Est. Cost:** \$19.3 million, including demolition of existing library building in Lindero Lake Park

**Delivery:** Design Build



## Department of General Services

### Planned and Proposed Capital Development Opportunities FY2018/19 - 2022/23



Project	RFB/RFP Forecast	Scope	Delivery	Est Project Cost
Sheriff Emergency Vehicle Operations Center (EVOC)	RFSQ/RFP summer 2018	Site acquisition and improvements for emergency vehicle maneuvers training.	Design-Build	Est. \$26.5 million
San Marcos Road Maintenance Station & Fleet Garage	Programming for RFSQ/RFP fall 2018	Construct new fleet maintenance facility for County vehicles.	Design-Build	Est. \$7.5 million
Ohio Street Renovation/ Replacement	Programming	Construct new facility to provide enhanced services to aid rehabilitation and treatment.	Design-Build	Est. \$18.8 million
Casa de Oro Library	Site search, programming	Construct new 13,500 SF Library with teen and children's areas and community room.	Design-Build	Est. \$15.8 million plus land acq.
Inmate Transfer Tunnel - Courthouse Commons Development	RFP October 2017	Construct inmate pedestrian tunnel from Central Jail to new State Courthouse.	Developer	TBD
Mt. Laguna Fire Station #49	Programming	Planning and programming for addition of new building for apparatus bay, future replacement/renovation of existing station.	TBD	Est. \$1.4 million
Consultant & Job Order Contracting (JOC) Procurements	RFB/RFP Forecast	Scope	Delivery	Est Cost
Architect, Engineer, Construction/Project Management and other consulting services	Periodically, through BuyNet or City, County, Port Rotation	Provide project specific and As Needed consulting services in support of various projects, studies and assessments.	Consultant contract	Up to \$1 million annually
Large project-specific design and CM consulting services	Periodically	Provide project specific support to County project management team.	Consultant contract	Varies
JOC General, Mechanical/ HVAC, Electrical, Paving, various specialty contractors	Periodically through the year	Provide general, engineering or specialty construction services for County projects.	JOC Contract	Up to \$4.5 million

#### Consulting Opportunities

The City, County and Port District Consultant Rotation List can be used for consultant services less than \$1,000,000 annual fee. These include architectural, construction and project management, engineering and specialty professional consulting services. Also register on and monitor the County's BuyNet Website for new advertised procurements. Such procurements may include architectural, various engineering services, construction management, commissioning and other professional services.

Additional information can be found at:

County Operational Plan & Budget Information - [www.sdcountry.ca.gov/auditor/budinfo.html](http://www.sdcountry.ca.gov/auditor/budinfo.html)

City, County, Port Rotation - [www.sandiego.gov/publicworks/about/contracting/consultant/rotationlist.shtml](http://www.sandiego.gov/publicworks/about/contracting/consultant/rotationlist.shtml)

County Property Disposition and Development Opportunities - [www.sdcne.com](http://www.sdcne.com)