



AIRPORT DEVELOPMENT PLAN

Design-Build Institute of America
September 8, 2015

Lindbergh Field - 1935



Lindbergh Field - 1944



Lindbergh Field - 1955



San Diego International Airport Today

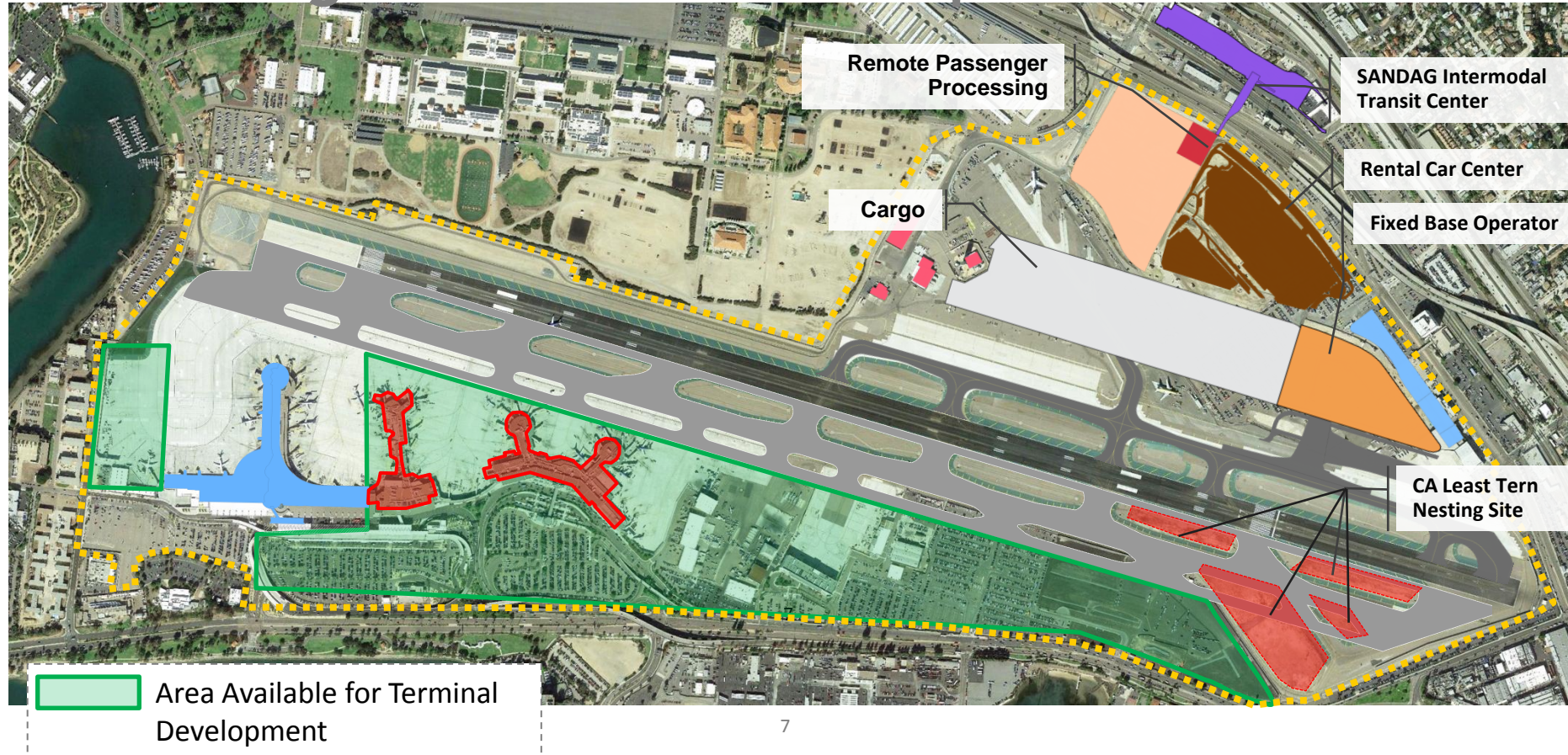


What is the Airport Development Plan?

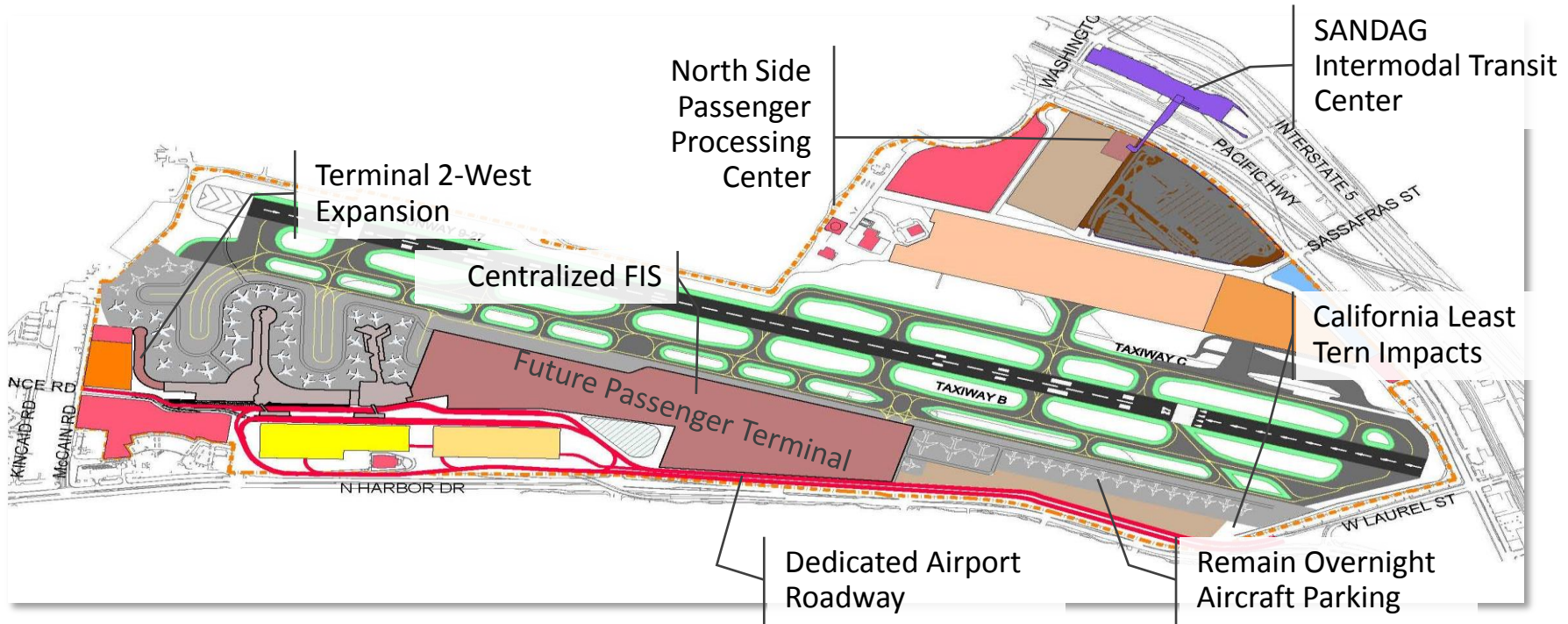
- In 2006 a county-wide ballot measure to move the airport was defeated
- Therefore, SAN will continue in its current location for the foreseeable future
- The Airport Development Plan (ADP) will define optimal development at SAN



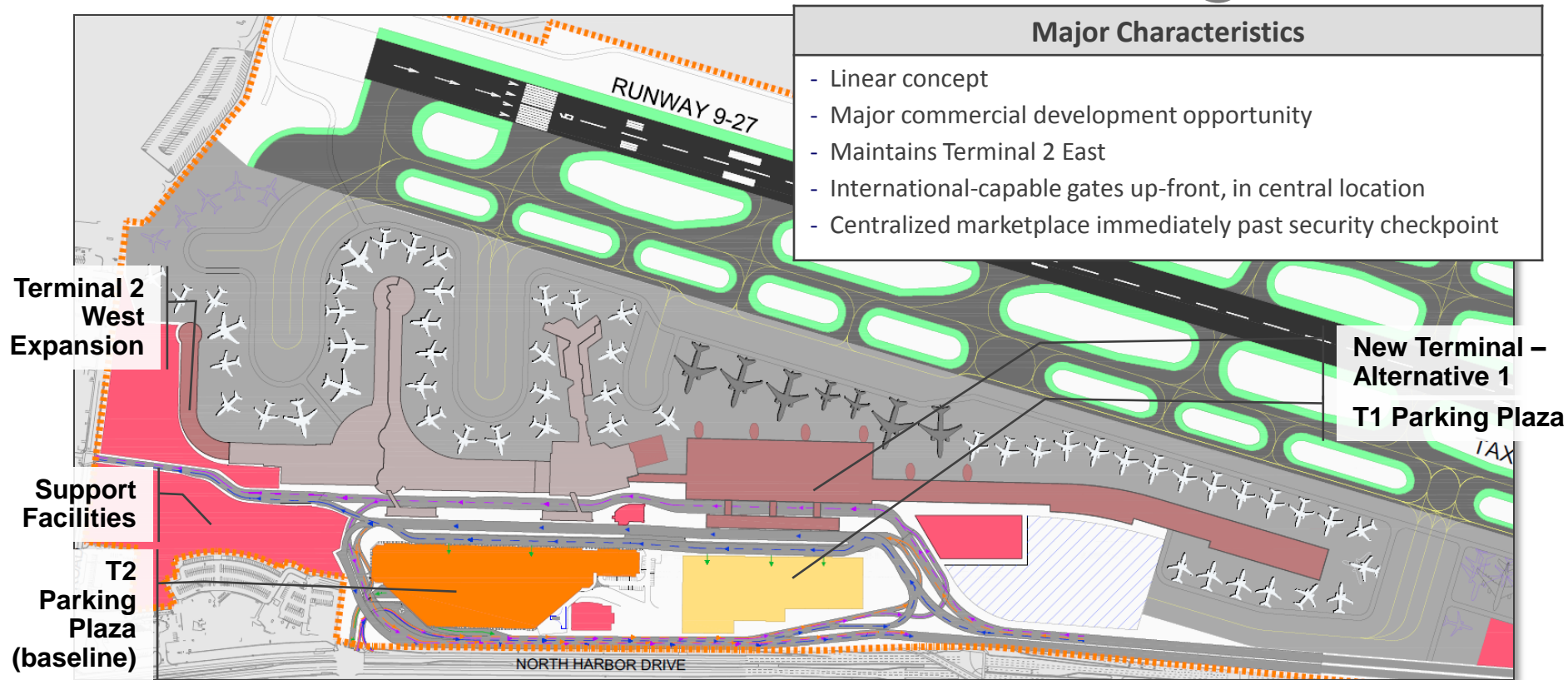
Defining the Terminal Development Boundaries



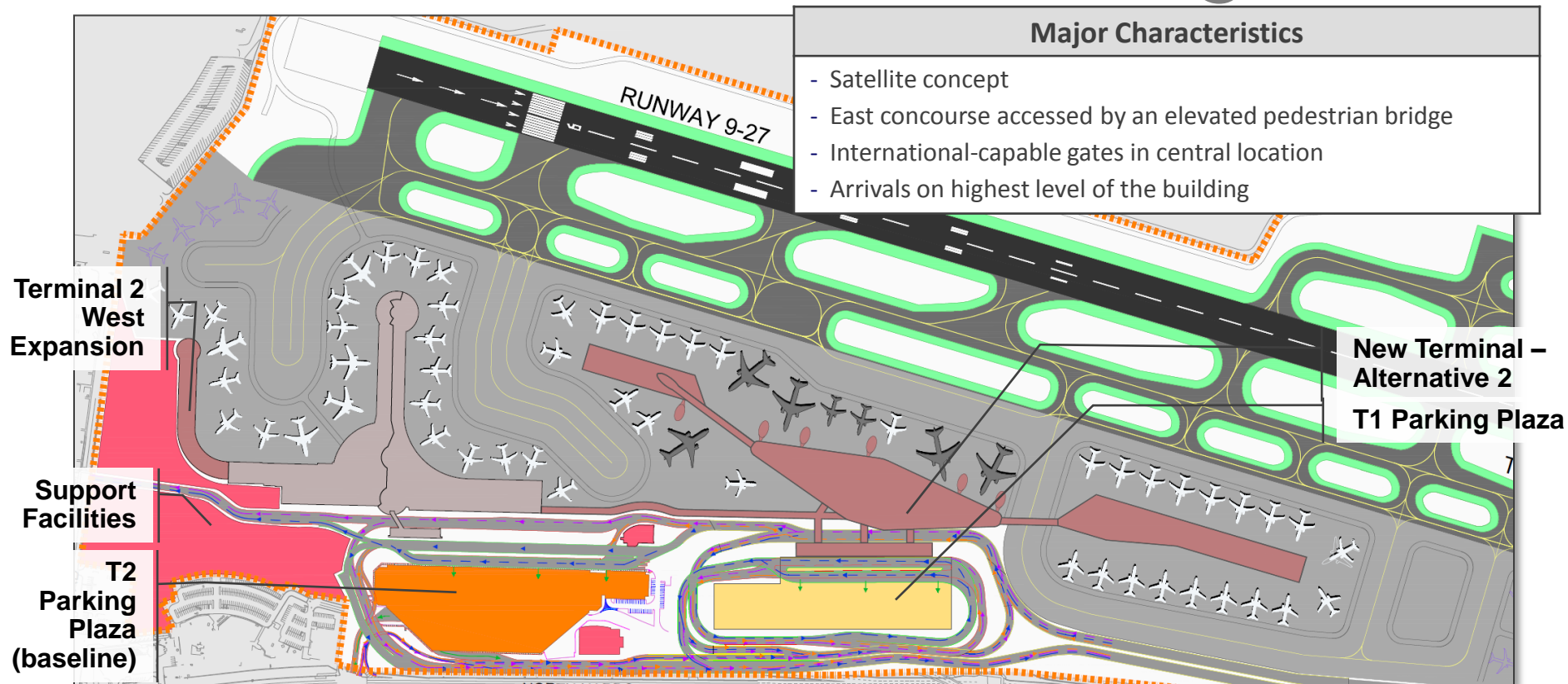
Common Elements in Alternatives



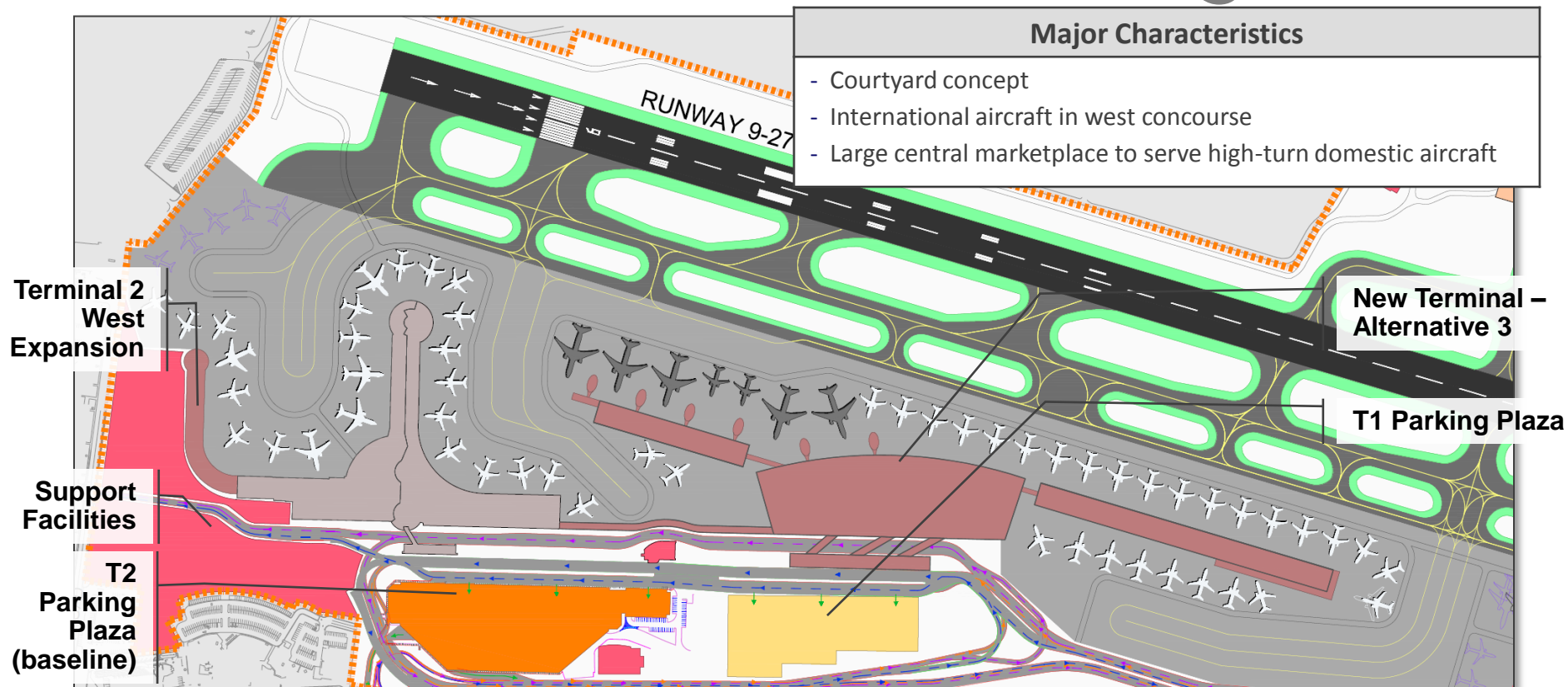
Alternative 1 - Ultimate Configuration



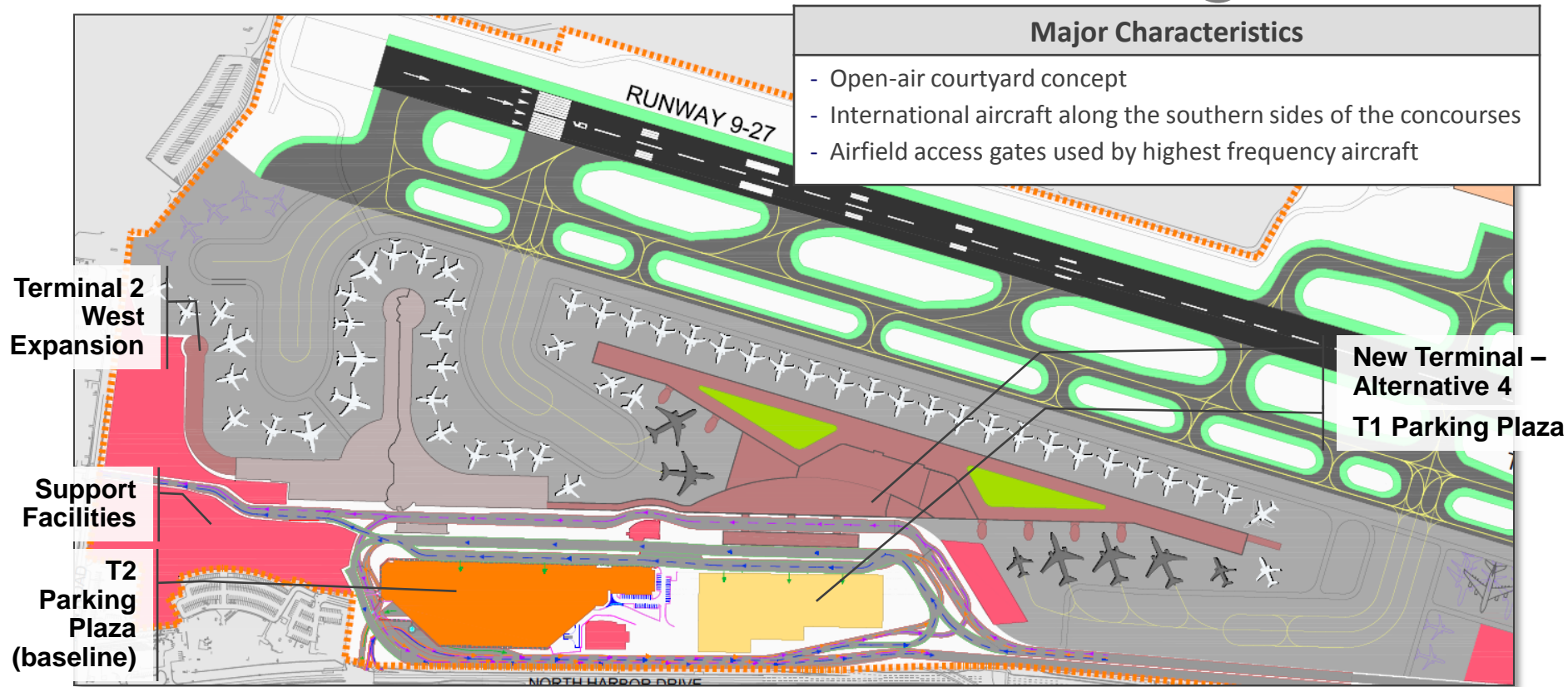
Alternative 2 - Ultimate Configuration



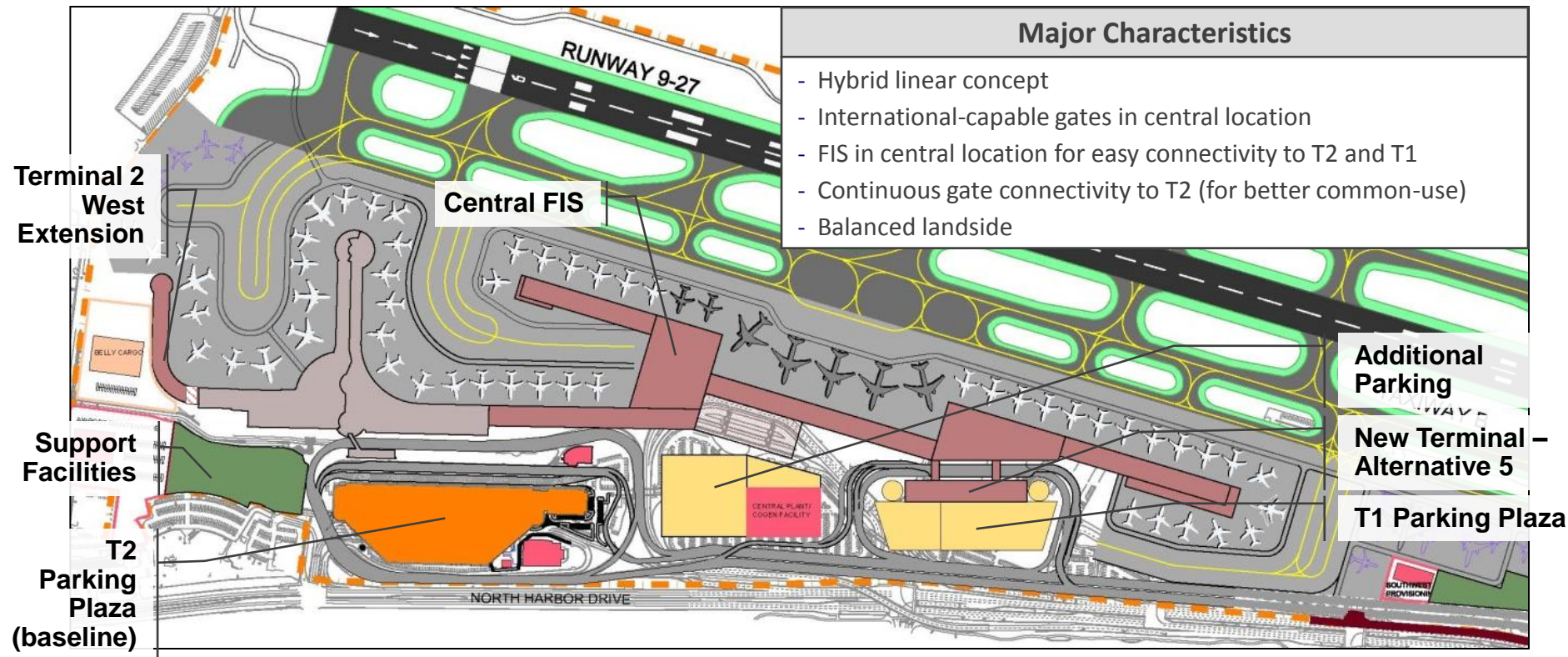
Alternative 3 - Ultimate Configuration



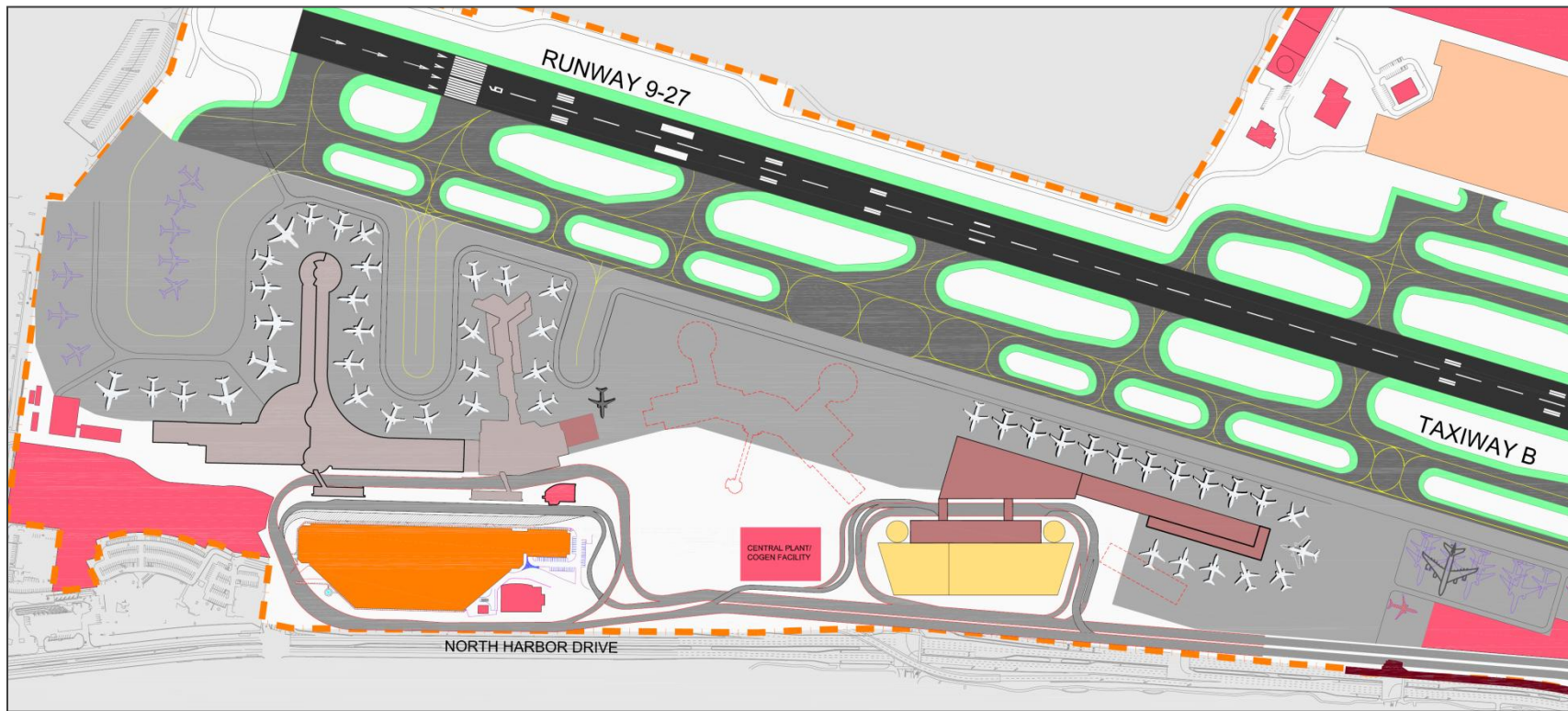
Alternative 4 - Ultimate Configuration



Alternative 5 - Ultimate Configuration



Alternative 5 - Interim Configuration



Terminal Alternatives Evaluation Methodology

Goal Setting

Goals and objectives defined to guide future airport development recommendations, for the following areas:

- Ground access
- Passenger terminal facilities
- Airfield/airspace
- Sustainability
- Land development
- Social responsibility

Evaluation Criteria Definition

Measurable criteria were established for each objective

Alternatives Development

Alternatives **1** through **5**

Evaluation

Score and rank the alternatives

Select Preferred development alternative

Alternatives Evaluation Summary Results (Stakeholders and Technical Team)

Alternative	PAL 12	PAL14	Overall Ranking
1	66	76	142
2	91	86	177
3	71	75	146
4	59	72	131
5	48	83	131

Note: The lower the score the higher the ranking

Rough Order of Magnitude Preliminary Costs

- ROM cost estimates include ADP projects only, including Dedicated Airport Roadway

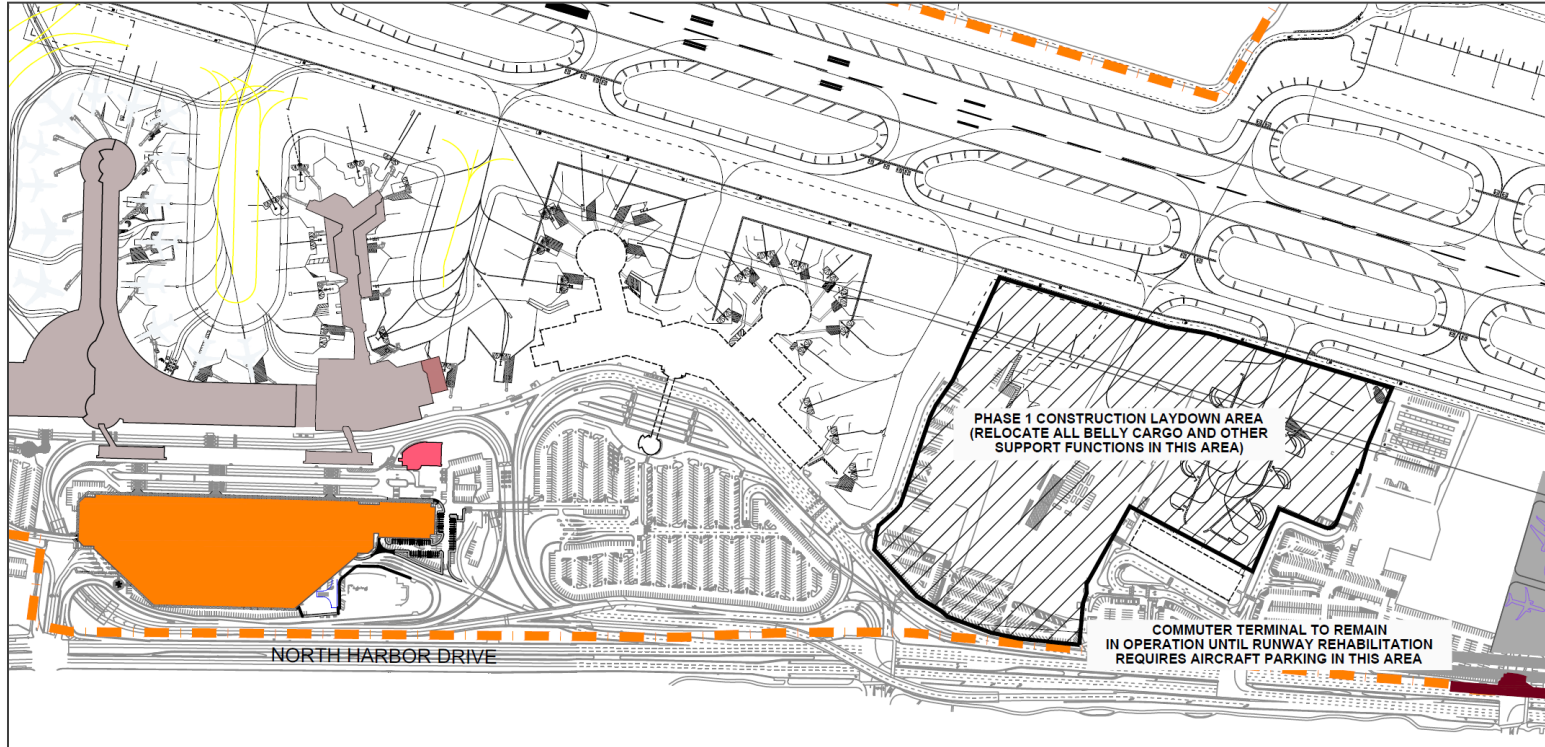
Alternative	Capital Cost (2015 dollars)
1	\$ 2.1 billion (+ future cost of replacing T2E)
2	\$2.4 billion
3	\$2.4 billion
4	\$2.6 billion
5	\$2.2 billion

Next Steps

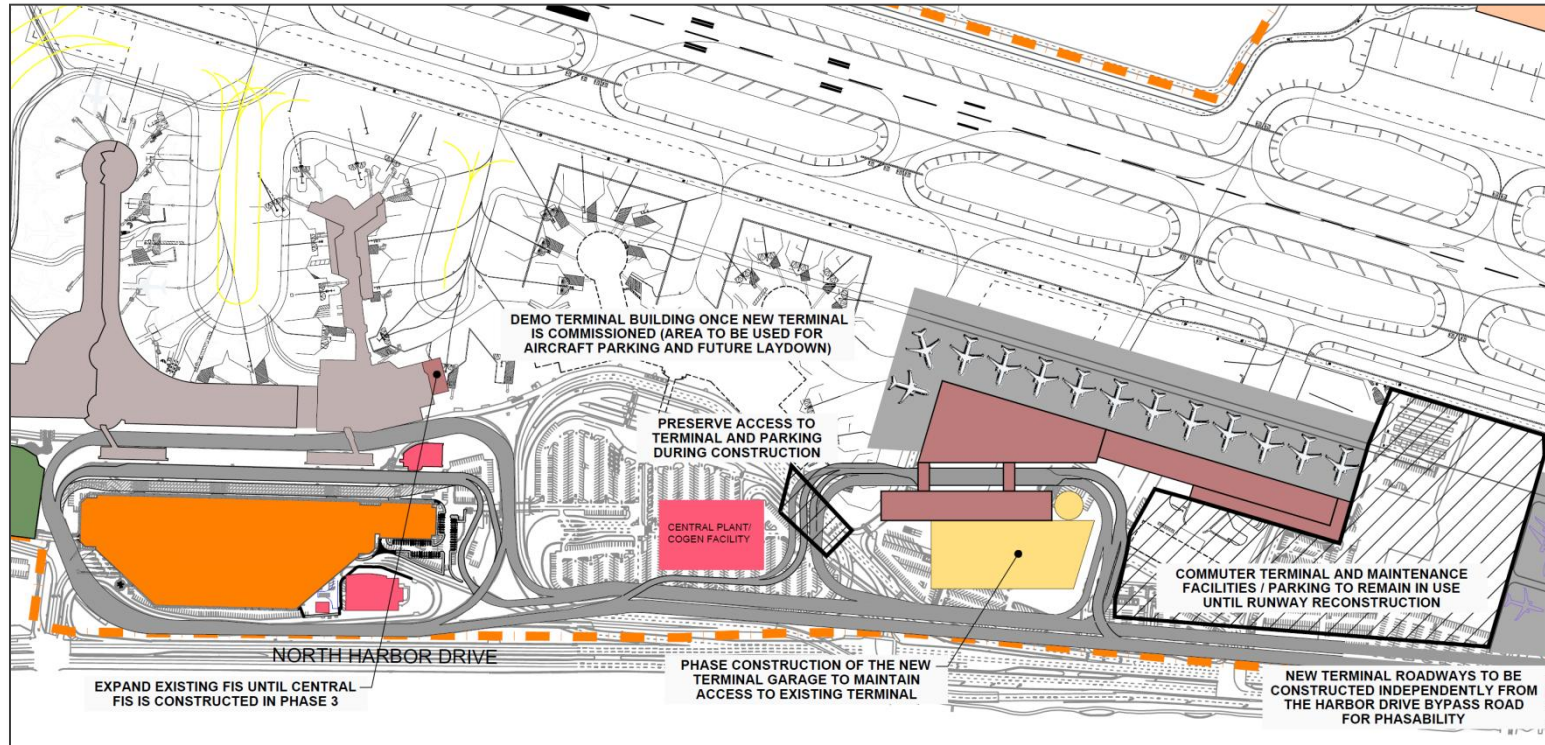
- Continue public & stakeholder coordination
- Present Roadway Alternatives to Board
(September 17, 2015 Board Meeting)
- Prepare preferred alternative for Board consideration
(October 15, 2015 Board Meeting)
- Conduct environmental analysis

Questions?

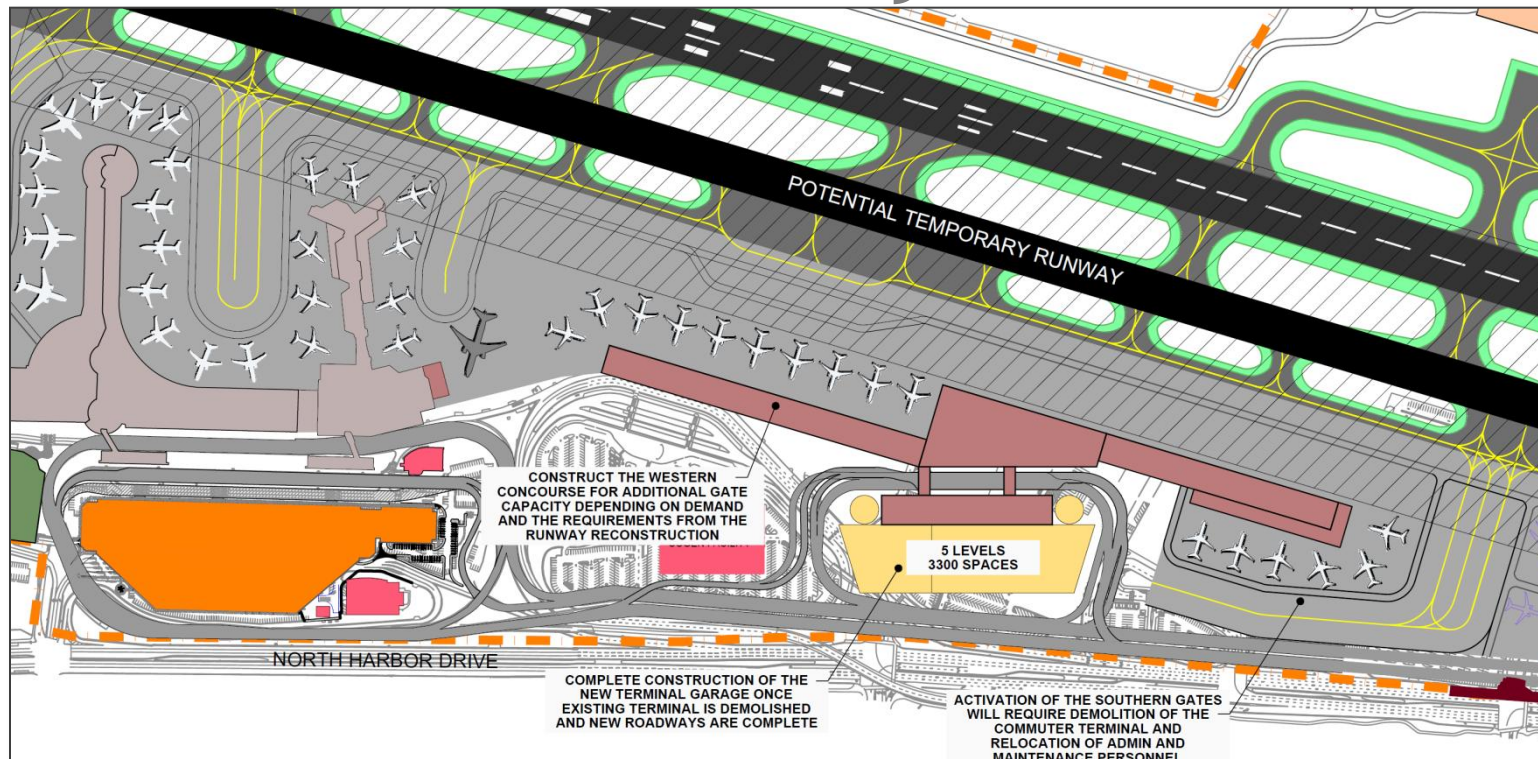
Phase 1 - Clear East Site



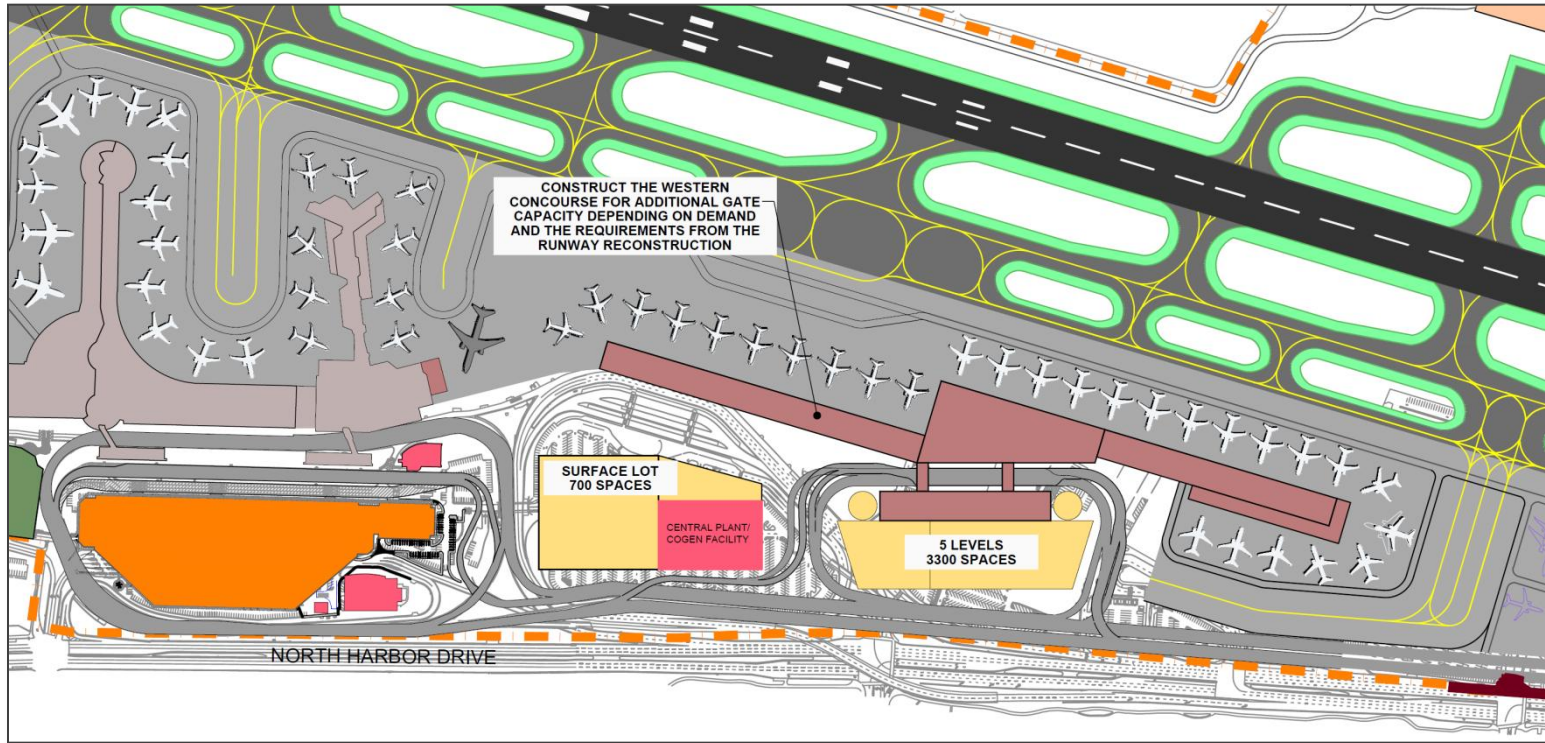
Phase 2 - Build Southwest Gates with In-Terminal Admin Space; Demo T1



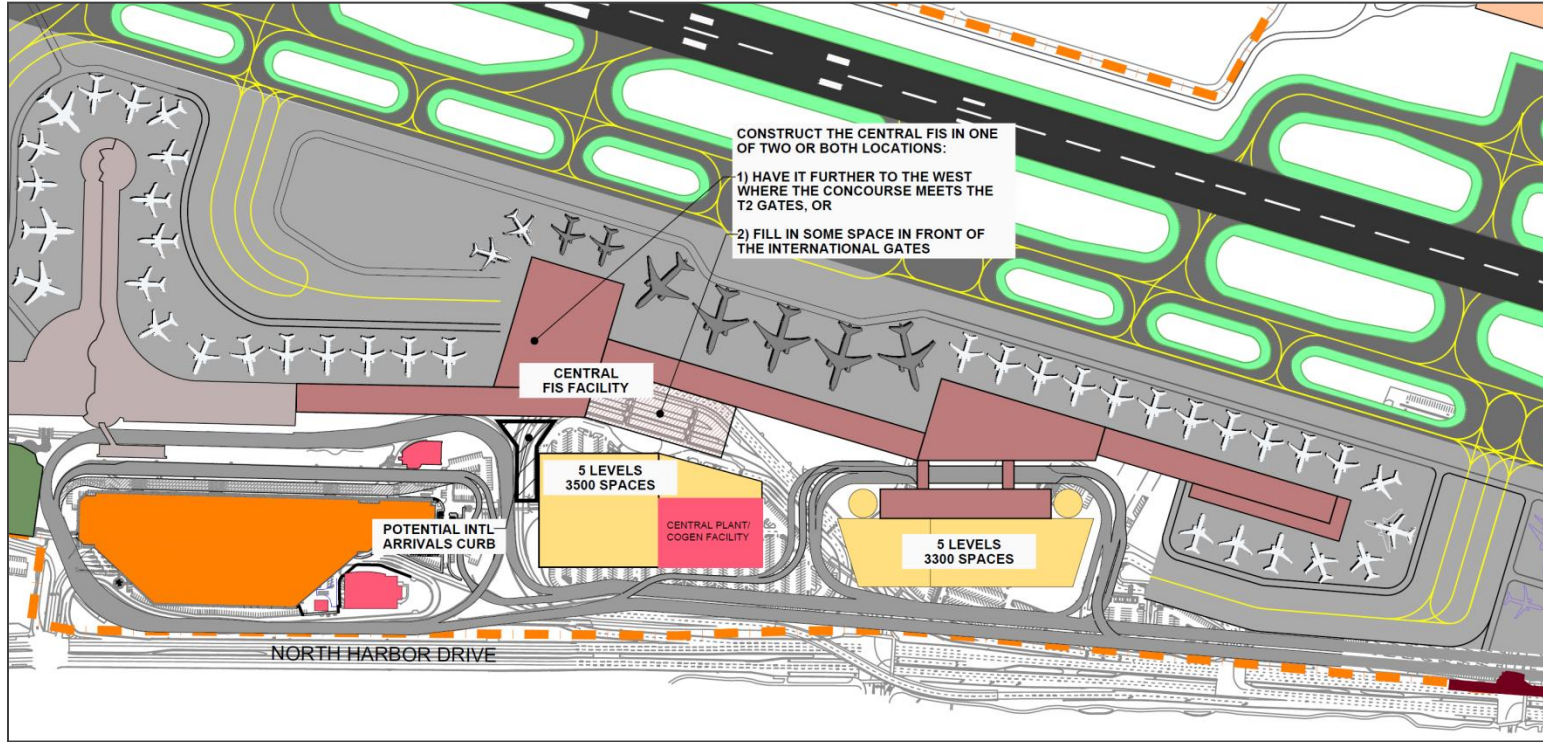
Phase 3A - Build New Terminal Extension; Rebuild Rwy 9-27



Phase 3B - Re-Occupy North T1 Gates



Phase 4 - Build New FIS; Demo T2E; Connect T1 to T2



Phase 5 - Build North Terminal Extension

